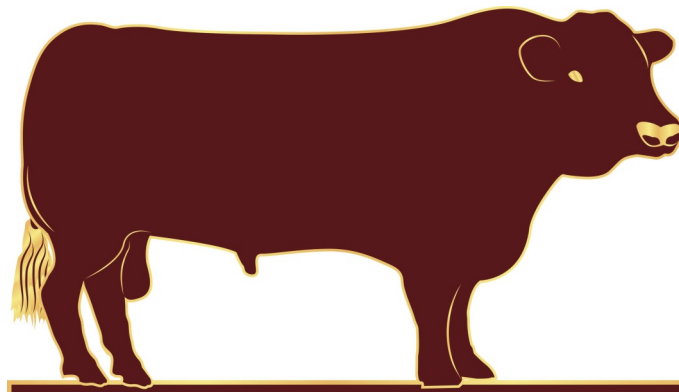


SUSSEX
CATTLE
SOCIETY



SUSSEX

2024
BULL
CATALOGUE

SOUTHVIEW POLL SULTAN 4TH 22-1444-P-B

UK331686/300138 Born 18/02/2022



Paternal Grand Sire: Greensons Howwlett GAT-12-192

Sire: Southview Poll Sultan 1st 18-1321-P-A

Paternal Grand Dam: Goldstone Gaiety 64th 13-0846

Maternal Grand Sire: Mayfield Poll Captain 3rd 09-1020-P

Dam: Southview Poll Feroder 4th 14-0877-P

Maternal Grand Dam: Southview Feroder 1st 12-0006-P

Heterozygous Polled and very quiet.

BVD free herd. Will be blood tested for Lepto, IBR and Johnnes and fertility tested prior to leaving the farm.
One year TB Parish.

<i>Adjusted weights</i>	100 Day	200 Day	300 Day	400 Day	500 Day	Scanned
Weight (kg)	185		414	506	567	N

<i>Analysis Date: 08-12-23</i>	Birth Weight EBV	Calving Ease EBV	Calving Value EBV	200 Day Weight EBV	400 Day Weight EBV	Muscle Depth EBV	Fat Depth EBV	Beef Value	Maternal Value
EBV	1.40	-0.30	2	27	58	3.80	0.40	37	15
ACC	58%	42%	45%	63%	67%	52%	34%	65%	28%

Contact: Philip Ashby 01225864102 / 07971241082

BROADLANDS POLL CAPTAIN 1ST 20-1838-P

UK286856/403054 Born 14/04/2020



Sire Elbridge Captain 2nd 14-1568
Pat.g.s. Mayfield Poll Captain 7th 11-1108-P
Pat.g.d. Elbridge Beauty 58th 07-0970
Dam Windsor Shandy 2nd 14-0113
Mat.g.s. Regent 3rd of Goldstone 09-0846-P
Mat.g.d. Windsor Shandy 1st 11-1019

High heard health—Great temperament—TB 1—Organic—Easy Calving—Ready to work

Contact: Lisa Buchanan 01825 712493



WINDSOR GLOW-WORM 1ST 19-0994

UK286856/302864

Born 07/10/2019



Sire Petworth Glow-worm 224th 10-1209

Pat.g.s. Friths Glow-worm 1st 16674

Pat.g.d. Petworth Knot 165th 89525

Dam Windsor Caroline 22nd 16-0976

Mat.g.s. Regent 3rd of Goldstone 09-0846-P

Mat.g.d. Windsor Caroline 5th 09-1105

After 3 years will be coming back on his daughters.

Contact: John Young 07831529680 cmaldonado@live.co.uk

SOUTHVIEW POLL REGENT 1ST 18-1324-P

UK331686/200102 Born 05/09/2018



Paternal Grand Sire: Poll Regent 1st of Goldstone 08-0807-P

Sire: Poll Regent 7th of Goldstone 11-1054-P

Paternal Grand Dam: Poll Snowdrop 66th of Goldstone 91191-P

Maternal Grand Aylesford Poll Stargazer 1st 08-0997-P

Dam: Southview Poll Feroder 1st 13-0567-PP

Maternal Grand Dam: Chamberlaynes Feroder 1st 07-1032

Heterozygous Polled Proven sire and very quiet.

Calves and down calved heifers can be seen. Selling as I have one of his offspring to replace him.

BVD free herd. Will be blood tested for Lepto, IBR and Johnnes and fertility tested prior to leaving the farm.

One year TB Parish.

Adjusted weights	100 Day	200 Day	300 Day	400 Day	500 Day	Scanned
Weight (kg)	170		355	476	583	N

Analysis Date: 15-04-2024	Birth Weight EBV	Calving Ease EBV	Calving Value EBV	200 Day Weight EBV	400 Day Weight EBV	Muscle Depth EBV	Fat Depth EBV	Beef Value	Maternal Value
EBV	0.50	1.50	4	23	55	3.80	0.10	38	18
ACC	75%	62%	64%	79%	78%	72%	49%	79%	40%

Contact: Philip Ashby 01225864102 / 07971241082

ELBRIDGE ENDEAVOUR 4th 17-1274

UK261028/402701 DoB: 07/09/2017

Sire: Boxted Endeavour 3rd 11-1112
g.s.: Mayfield Intelligent 1st 07-0795
g.d.: Boxted Heedless 25th 08-0367

Dam: Elbridge Careless 186th 14-0977
g.s.: Mayfield Poll Captain 7th 11-1108-P
g.d.: Elbridge Careless 121st 91476

Contact: Tristan Pengilley 01323 844582 / 07736320069

BLACK VEN POLL STARGAZER 3rd 16-1322-P

UK262875/200373 DoB: 24/02/2016

Sire: Petworth Poll Stargazer 2nd 08-0816-P
g.s.: Petworth Poll Stargazer 1st 06-0822-P
g.d.: Petworth Midley 2nd 90167

Dam: Black Ven Shawandaisee 31st 09-0024
g.s.: Trottenden Major 5th 16595
g.d.: Black Ven Shawandaisee 16th 89361

Contact: David Spanton 07980881924

PETWORTH REGENT 11TH 13-1263

UK263412/200992 Born 24/04/2013



Pat GS : Boxted Regent 3rd 16680

Sire : Poll Regent 4th of Goldstone 09-1025-P

Pat GD : Lofty Lily 17th of Goldstone 87316-P

Mat GS : Mayfield Major 1st 16565

Dam : Petworth Snowdrop 11th 90163

Mat GD : Petworth Snowdrop 8th 88072

Member of Biobest Health Scheme, BVD accredited and Signet Recorded

Winner of the Best Bull in the Intermediate Herd Competition 2023

Contact: 01580 211201 / 07765950944 (Kent)